

Artwork Guidelines

Follow for a print ready solution

Please follow the artwork guidelines below when supplying artwork to us.

File Formats



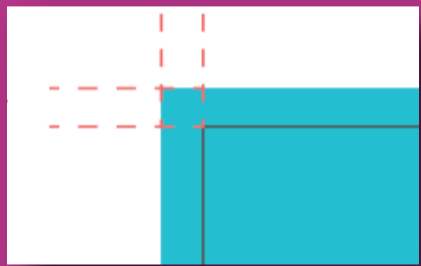
- Hi-res PDF - with all fonts embedded or outlined (recommended)
- Photoshop files - EPS, PDF, PSD, TIFF
- Illustrator files - Ai, PDF, EPS,
- InDesign files - supply all fonts and links

File Setup



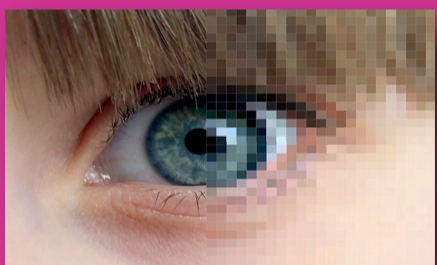
- Please name your file with your order reference & size
- All artwork to be supplied with trim marks and bleed
- For multi-panel jobs such as wallpaper or pop up displays please do not split your artwork in to panels, we will do this for you
- Turn off overprint on all files
- For items cut to shape, assign the cut as a spot colour and call it: **Thru-cut** (Case sensitive)
- For items cut and creased such as packaging, assign the cut as: **Thru-cut** and assign the crease as a spot colour and call it: **Crease** (Case sensitive)

Bleed Requirements



- Fabric graphics 50mm all edges
- Wall paper graphics 50mm all edges
- PVC Banners 30mm all edges
- All rigid boards, paper and vinyl products 3mm to all edges

Resolution & Scale



- 100% Scale - minimum 100dpi
- 50% Scale - minimum 200dpi
- 25% Scale - minimum 400dpi
- 10% Scale - minimum 1000dpi

**Where possible
please supply
your artwork
at 100% scale.**

Colour Information



- Use Solid Coated Pantone references
- Printed Pantone colours **MUST NOT** be renamed
- Vector files supply as CMYK
- Bitmap files can be native RGB or CMYK
- If you require a White Ink - Call your spot colour: **Spot 1** (Case sensitive)

File Transfer



- The easiest way to supply your artwork is to click the link which was sent with your quote, this can then be uploaded to your job specific folder or email your artwork to print@prosign-uk.com and your account manager will process this for you
- Large files can be sent using services such as WeTransfer or WeSendit
- Dropbox - right click your file, create a link and send it to us

Happy to help!



- If you have any queries or need help with any artwork issues you may have please contact our Studio Team who will be happy to help you. if you wish to discuss anything artwork related please contact them direct at studio@prosign-uk.com, for all other none artwork related enquiries please email print@prosign-uk.com